



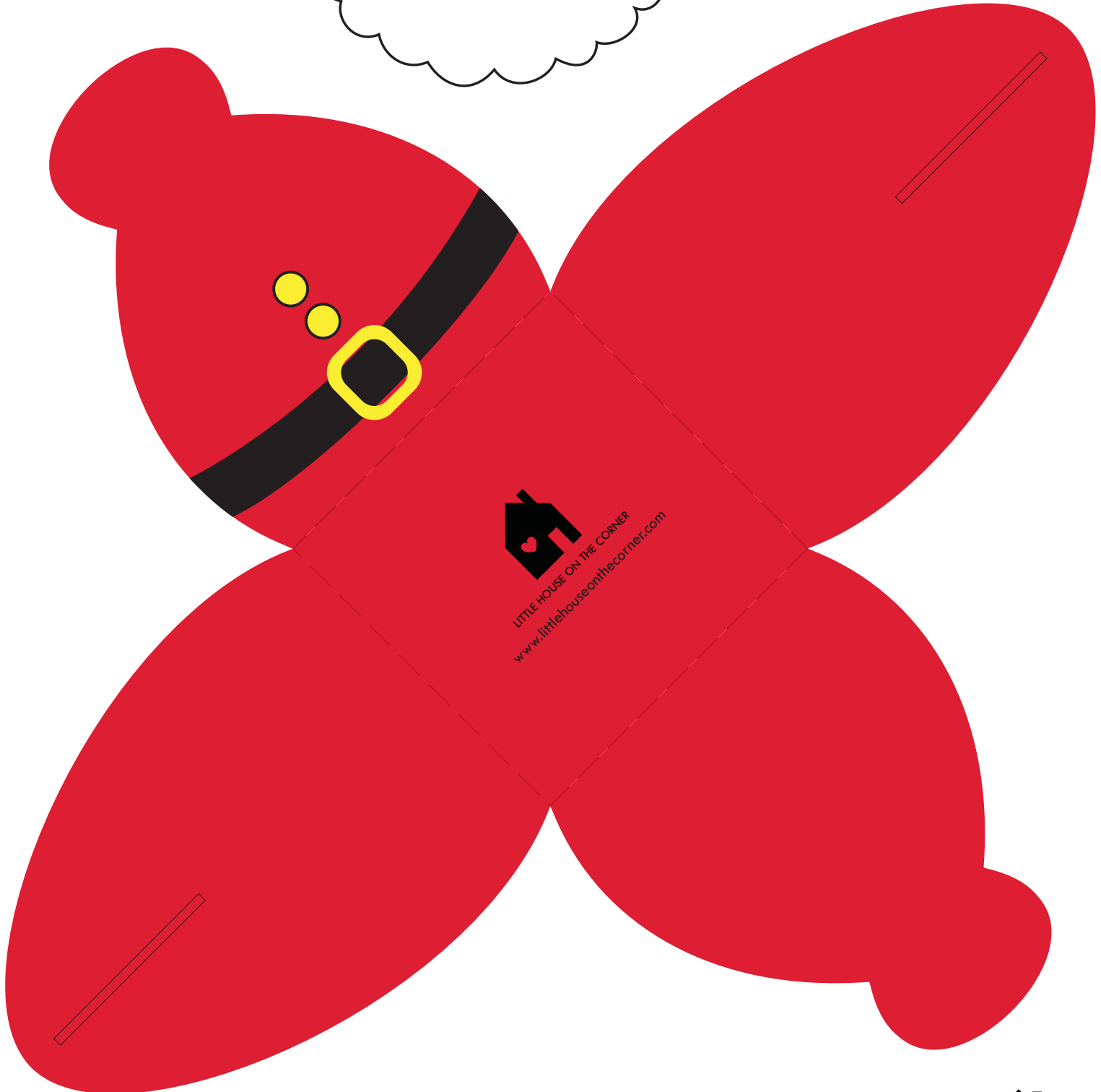
*free printable*

## SANTA BOX

Print the template on heavyweight paper.

Cut out the templates and fold along the dashed lines.

To assemble, apply a small dot of glue or double sided tape to the head and position on the side of the box.





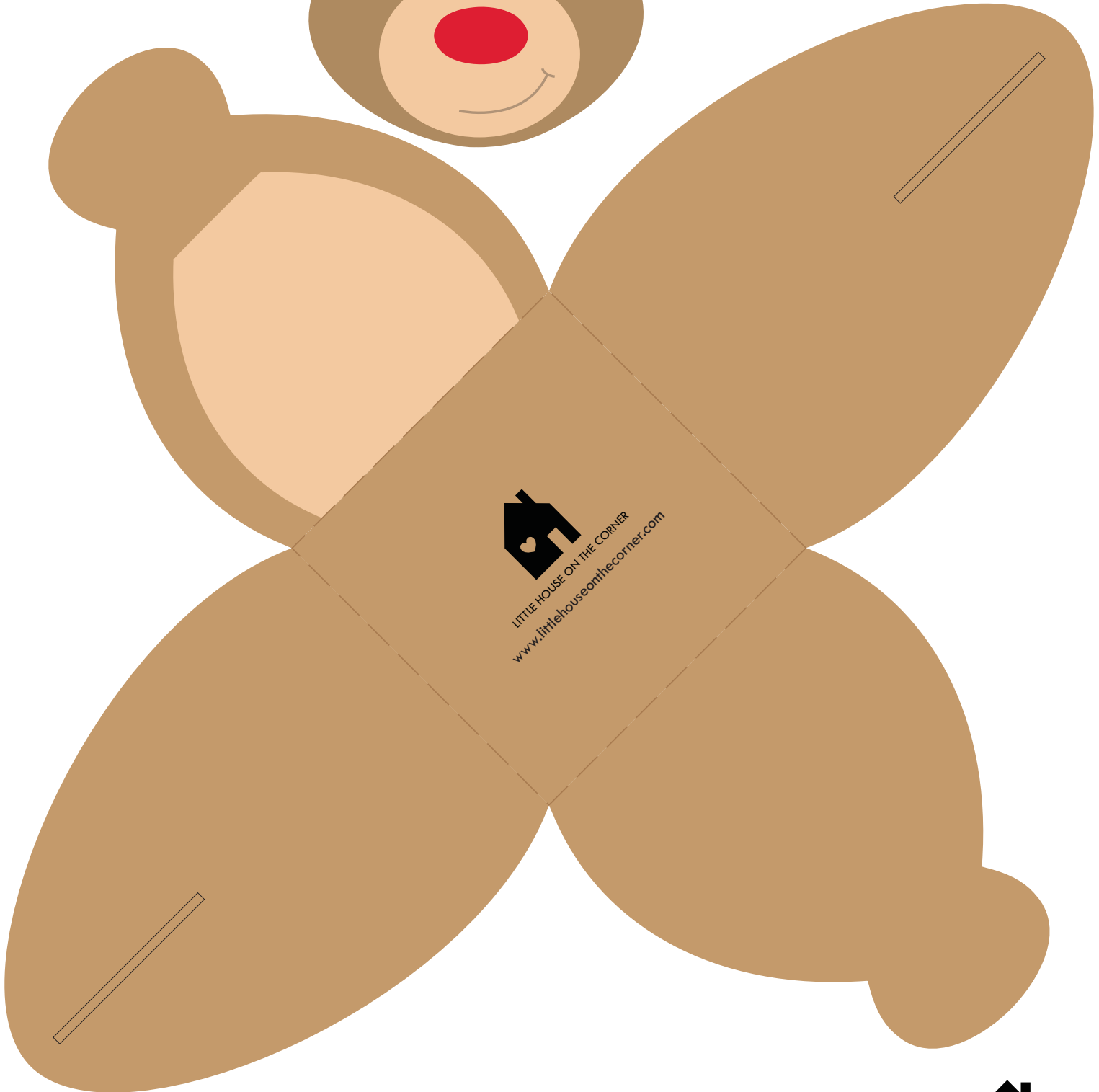
*free printable*

## **RUDOLPH BOX**

Print the template on heavyweight paper.

Cut out the templates and fold along the dashed lines.

To assemble, apply a small dot of glue or double sided tape to the head and position on the side of the box.



  
LITTLE HOUSE ON THE CORNER  
[www.littlehouseonthecorner.com](http://www.littlehouseonthecorner.com)



LITTLE HOUSE ON THE CORNER