

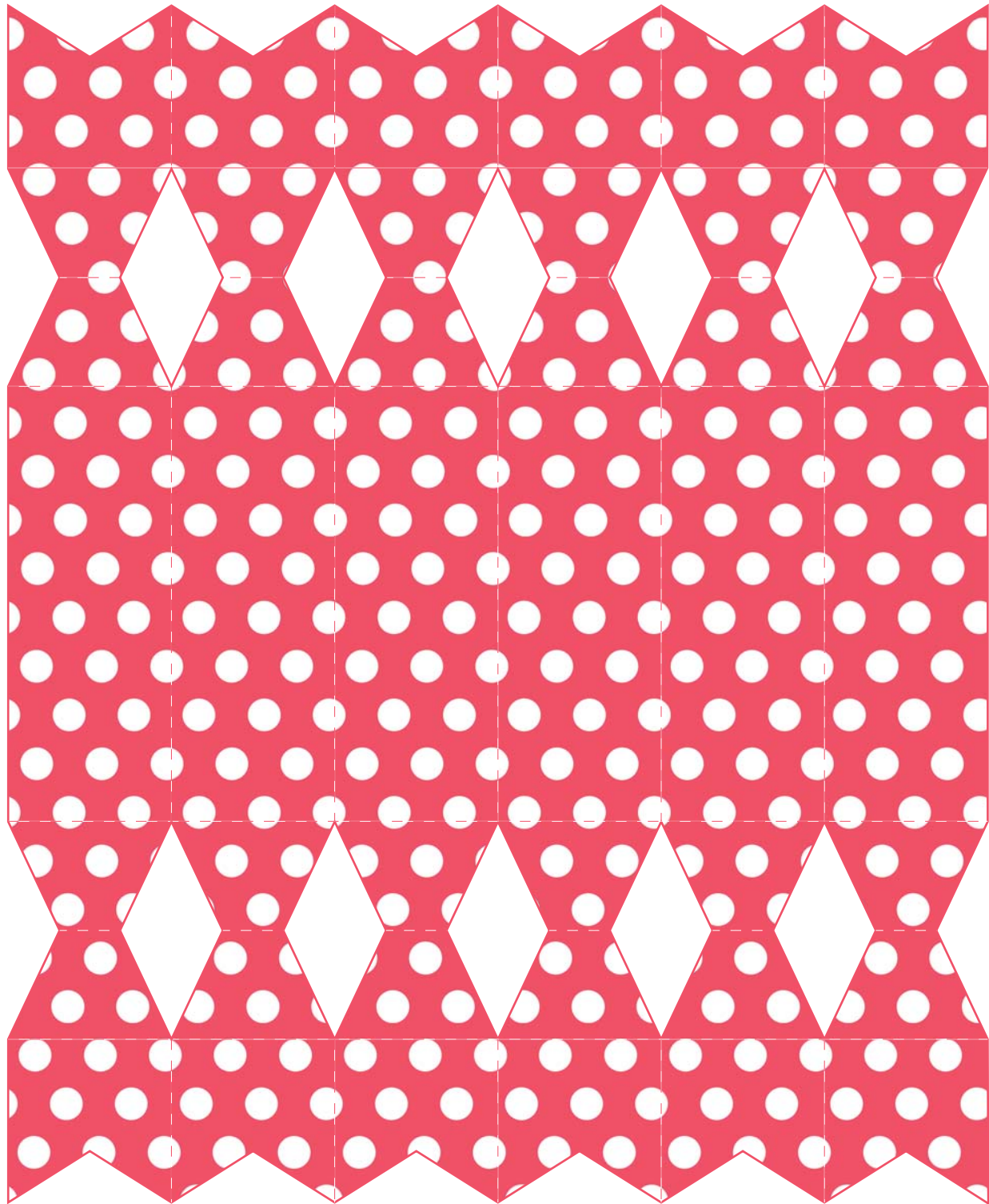
Valentine's Crackers

Print the template on heavyweight paper.

Cut out the templates, then score and fold along the dashed lines.

To assemble, apply a thin layer of glue or double sided tape to one of the end segments and glue together.

Fill with your Valentine's treats before tying the ends together with some ribbon.



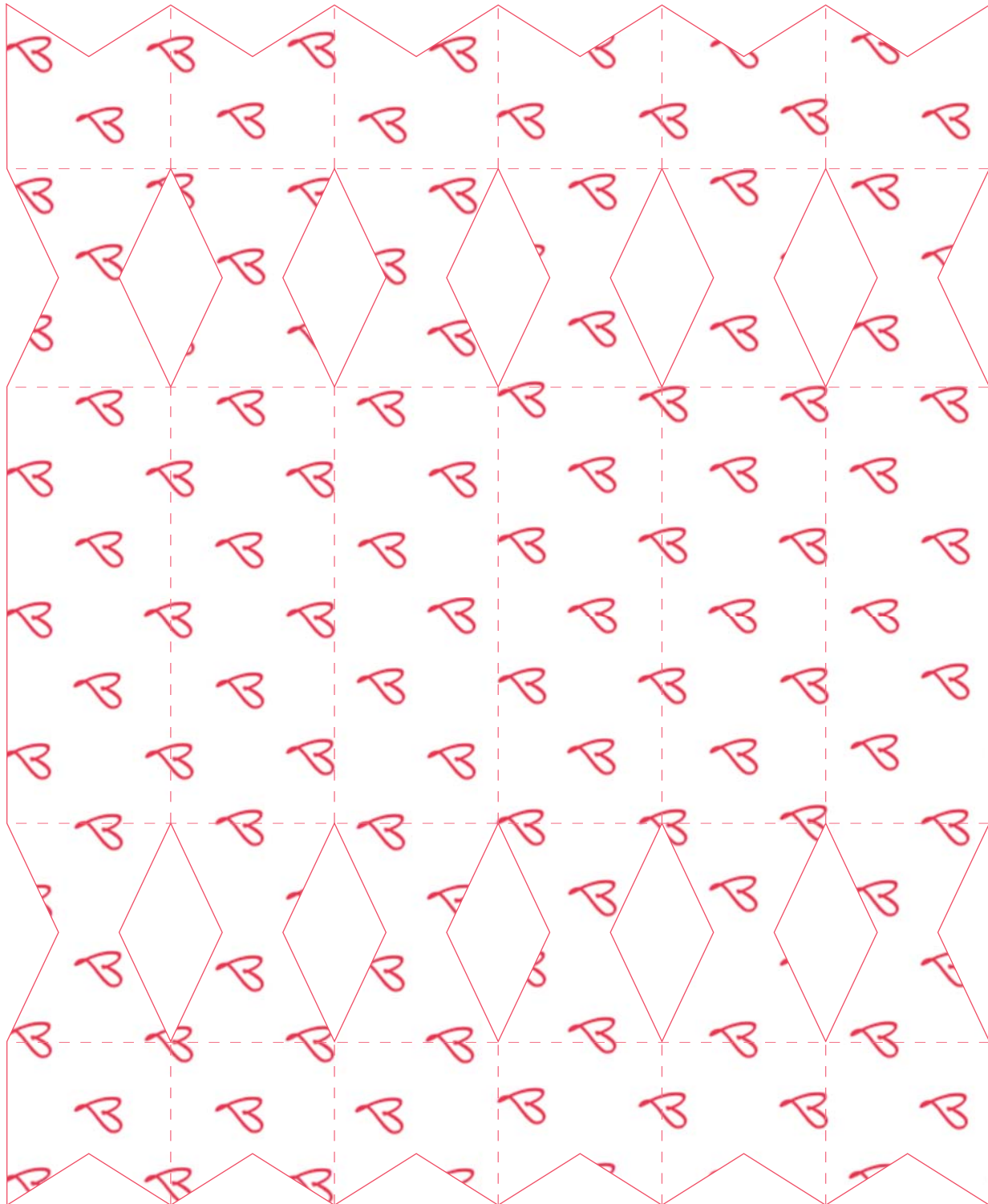
Valentine's Crackers

Print the template on heavyweight paper.

Cut out the templates, then score and fold along the dashed lines.

To assemble, apply a thin layer of glue or double sided tape to one of the end segments and glue together.

Fill with your Valentine's treats before tying the ends together with some ribbon.



Valentine's Crackers

Print the template on heavyweight paper.

Cut out the templates, then score and fold along the dashed lines.

To assemble, apply a thin layer of glue or double sided tape to one of the end segments and glue together.

Fill with your Valentine's treats before tying the ends together with some ribbon.



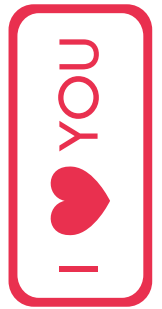
Valentine's Crackers

Print the template on heavyweight paper.

Cut out the templates, then score and fold along the dashed lines.

To assemble, apply a thin layer of glue or double sided tape to one of the end segments and glue together.

Fill with your Valentine's treats before tying the ends together with some ribbon.



Valentine's Crackers

Print the template on heavyweight paper.

Cut out the templates, then score and fold along the dashed lines.

To assemble, apply a thin layer of glue or double sided tape to one of the end segments and glue together.

Fill with your Valentine's treats before tying the ends together with some ribbon.

